

# COMPTRASEC

// Centre de droit comparé du travail et de la sécurité sociale //

UMR CNRS 5114

université  
de **BORDEAUX**



## WELCOME BOOKLET

Research study period  
Academic year 2020-2021

**COMPTRASEC - UMR 5114 CNRS**

Université de Bordeaux

16, Avenue Léon Duguit C 50057

33608 Pessac - France

Tel : +33 (0)5 56 84 85 42

Mail : [comptrasec@u-bordeaux.fr](mailto:comptrasec@u-bordeaux.fr)

Website: <http://comptrasec.u-bordeaux.fr/>

Hello!

You are about to embark on a research study period in our centre and we are delighted to welcome you here. The information below will make your trip easier and will be useful in preparing your study period.

Kindly take a little time to read this guide.

## o **COMPTRASEC**

### o **Overview**

The Centre for Comparative Labour and Social Security Law (*Centre de Droit Comparé du Travail et de la Sécurité Sociale*, COMPTRASEC) was founded in 1982. The Comprasec team is located in Pessac. It is a joint research unit (UMR) operated by the university and the *Centre National de la Recherche Scientifique* (CNRS). At present the Centre has 28 professors and research fellows, 17 associate researchers, 8 administrative staff members and around 35 PhD students.

### o **Comprasec secretariat**

When you arrive, please go to the secretariat (office F.153). Héloïse Lamirault will welcome you and will be available for any administrative questions you may have during your stay.

### o **Scientific team**

The team of professors and researchers will also be able to assist you in your research whenever possible.

### o **Documentation centre**

The Comprasec documentation centre (office F.130) is open from Monday to Friday, 9 am to 12.30 pm and 1.30 pm to 4.45 pm. The library personnel (Julie Zambau, Didier Blanchon and Pascale Chambaretaud) will be available to show you the documentation centre, explain how it works and make your search for materials easier. Computers are also at your disposal.

## o **BORDEAUX UNIVERSITY**

University of Bordeaux was born on January 1<sup>st</sup>, 2014, after several universities in Bordeaux merged (before that, the Comprasec was part of the Montesquieu-Bordeaux IV University). On the campus located in Pessac, it offers training courses in the fields of law and political science, economics, management and teacher training.

As well as the Comprasec documentation centre, the Law and Economic Sciences Library (n°16 on the map overleaf), the private law (n°18 on the map overleaf), public law (n°19 on the map overleaf) and European law (Building E, office E228) libraries all have substantial documentary resources.

For more information about the University, visit the website at [www.u-bordeaux.fr](http://www.u-bordeaux.fr)

## o ACCOMMODATION

**At your request**, we can provide you with a list of establishments offering fully-equipped accommodation. Except in exceptional cases, you will be asked to make your enquiries directly and personally.

When you arrive, do not hesitate to ask the staff at your accommodation to give you information about local shops (grocery stores, pharmacies, etc.) and public transport.

## o TRANSPORT

The City of Bordeaux and its suburbs are served by a good public transport network (buses and trams). Tickets (by the unit or for multiple trips) are on sale directly from the terminals at tram stops or in one of the TBC shops. For further information, visit the website at [www.infotbc.com/](http://www.infotbc.com/)  
The Comptrasec is located on the Pessac campus. To get there:

- o From Bordeaux centre : Take the tram line B towards “Pessac centre” or “France Alouette”. Get off at the “*Montaigne Montesquieu*” stop.

- o From Bordeaux-Mérignac Airport : Take the bus n°1 to “Gare St Jean”. Get off at “Gambetta” then take tram line B towards “Pessac centre” or “France Alouette”. Get off at the “*Montaigne Montesquieu*” stop.

- o From Bordeaux St-Jean train station: Take the tram line C towards “Parc des expositions”, Gare de Blanquefort” or “Cracovie”. Get off at the “Quinconces” stop then take tram line B towards Pessac centre” or “France Alouette”. Get off at the “*Montaigne Montesquieu*” stop.

You can also use the network of taxis:

Les taxis girondins: +33 (0)5 56 80 70 37

Aquitaine taxi radio: +33(0)5 56 86 80 30

## o SIGHTSEEING

Bordeaux is set in the south-west of France, and since 2007 has been included on the UNESCO World Heritage list, making it one of France’s most attractive cities for sightseeing. Close to the Atlantic coast, the region boasts a rich architectural, winegrowing and gastronomic heritage.

For more information, please contact Bordeaux Tourist Office:

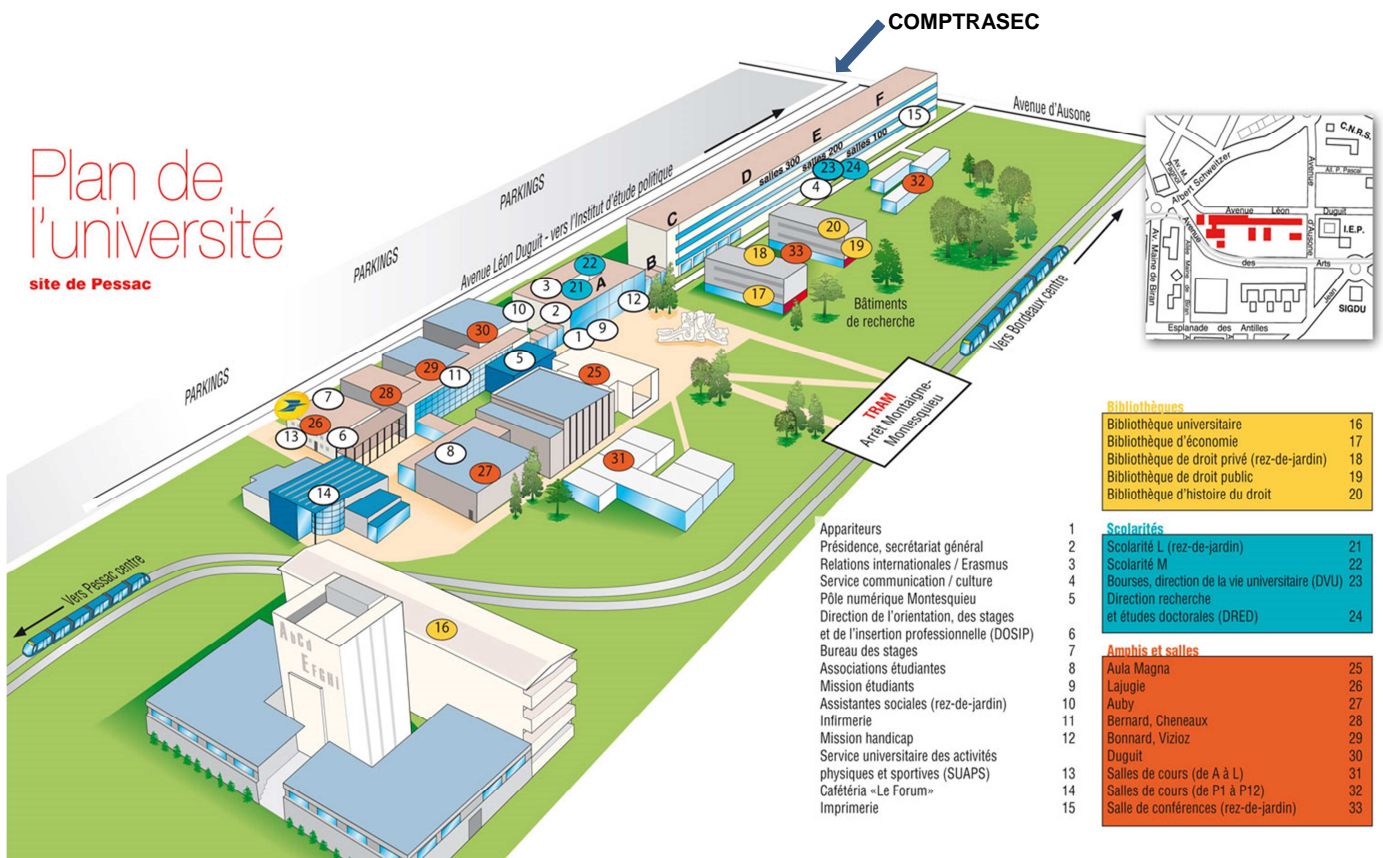
12 cours du XXX Juillet - 33080 Bordeaux Cedex

Tel: + 33 (0)5 56 00 66 00

[www.bordeaux-tourisme.com/](http://www.bordeaux-tourisme.com/)

## o FINDING YOUR WAY AROUND THE UNIVERSITY

Once you arrive on campus, head to the main reception building called “Université Montesquieu” (on the same side as where you get off the tram stop). Comprasec is on the 1<sup>st</sup> floor of Building F.



## o BEFORE YOU ARRIVE

- Please inform Héloïse Lamirault **as soon as** your study period dates are confirmed so that we can organise your stay as efficiently as possible.
- If you need an **internet access** while you are in the university building, we need to send a request to the IT department. Please give Héloïse Lamirault your **birth date** so she can take care of the request and get some codes before your arrival.

**o IMPORTANT : Note that it is impossible to do a research study at the following periods :**

- From December 24, 2020 to January 2, 2021
- During the month of August 2021

The whole Comprasec team wishes you a pleasant and fruitful stay!,

Contact: **Héloïse Lamirault** - +33 (0)5 56 84 85 42 – [heloise.lamirault@u-bordeaux.fr](mailto:heloise.lamirault@u-bordeaux.fr)